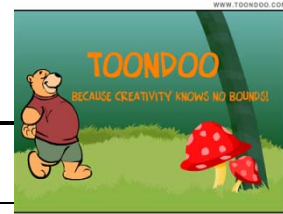


ToonDoo Starter Sheet

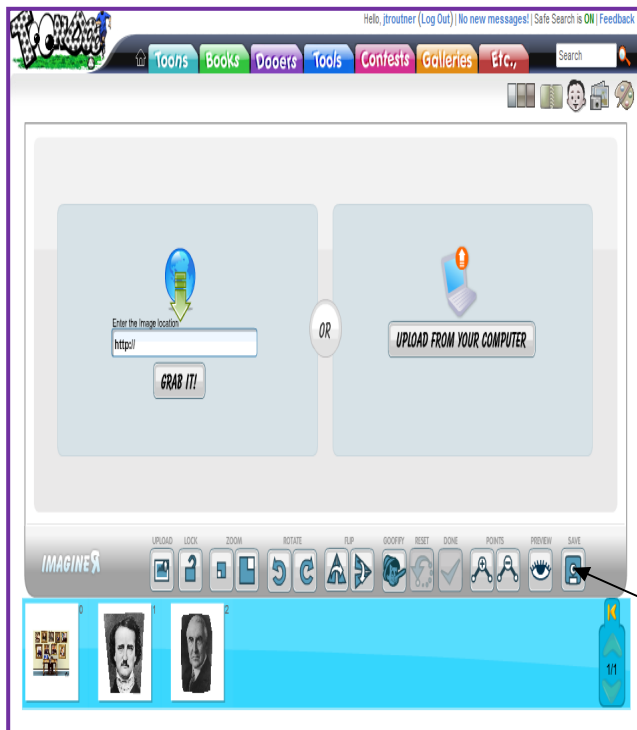


Fill out—

- Username
- Password
- Email

(must be a working address)

Consider having an email just for registrations



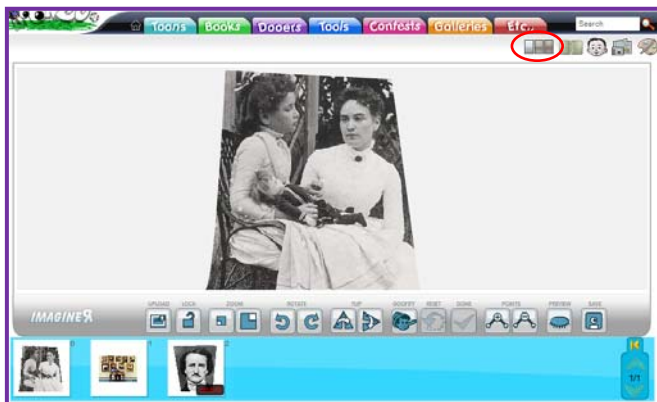
Click on the Imaginer icon usually on the right hand side of the screen under ToonDooMaker.

When the tool opens, click “Become an Imaginer”

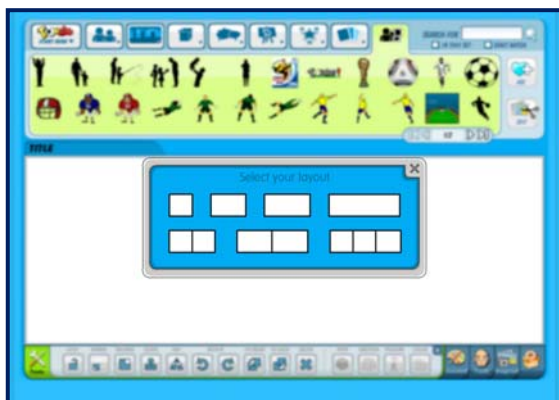
Choose to either upload pictures from your computer or a web site.

Use the tools to get the picture in a manner you like.

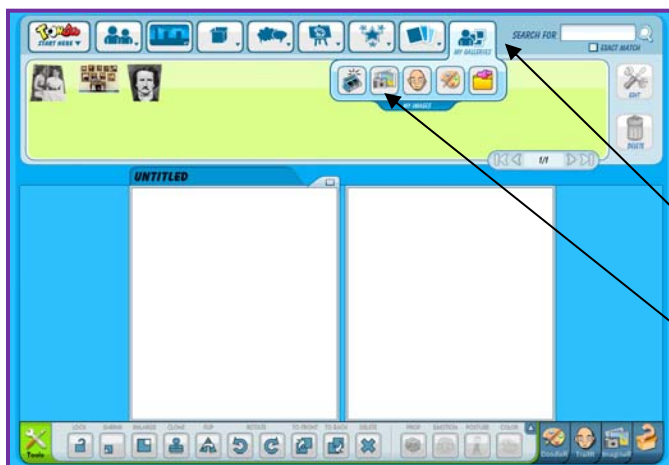
Click the Save icon to capture your final version. It should appear in the tray at the bottom of the screen.



Now move to ToonDoo Maker by clicking on the three pane icon near the top right of the screen.



Select the number of panes you want by clicking on the appropriate selection

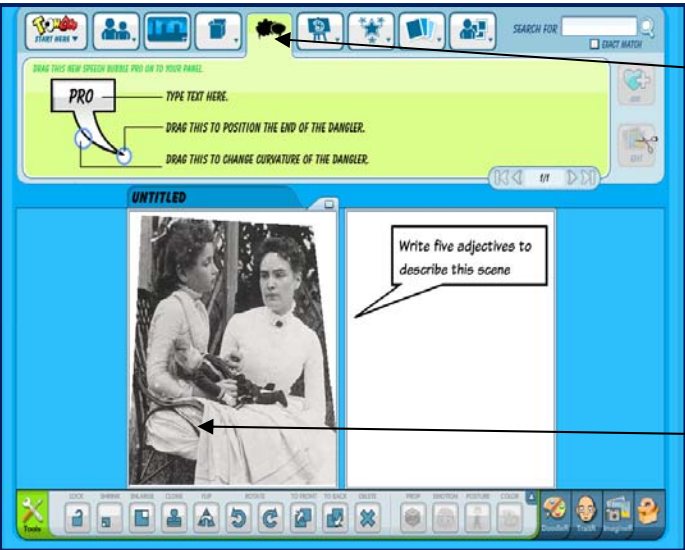
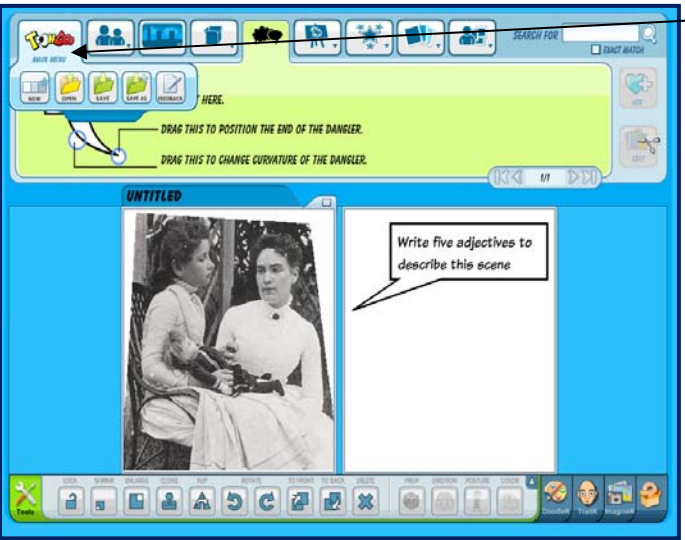



Click on My Galleries and then My Images to use your uploaded or captured pictures as clipart in your cartoon.

My Galleries

My Images

Just drop and drag the pictures into your cartoons

	<p>Click on the text bubble icon.</p> <p>Add your text.</p>
	<p>Click on the ToonDoo icon to get the Save options.</p> <p>Save your creation.</p> <p>Remember this is saved on the ToonDoo server not your hard drive at this point.</p> <p>You can go to My Toons to view and/or edit your creation.</p>
	<p>One option to use your creation as a piece of clip art is to right click on the image and then choose "Save Image As..."</p> <p>This lets you have a copy of the picture stored locally.</p>